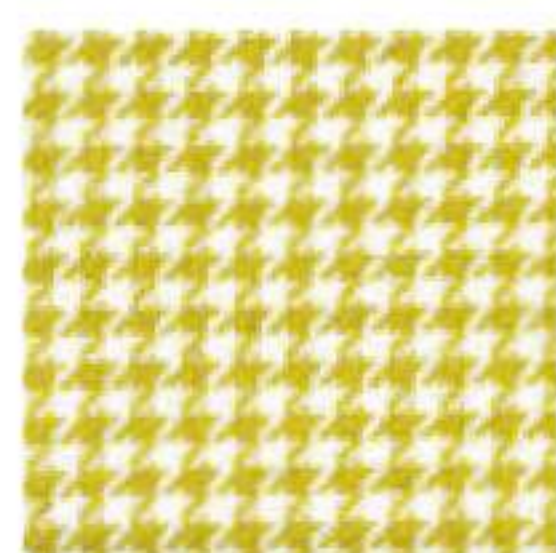


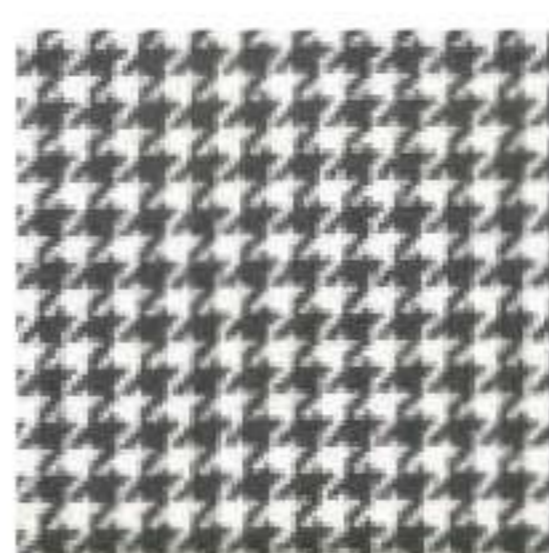
PIED DE POULE



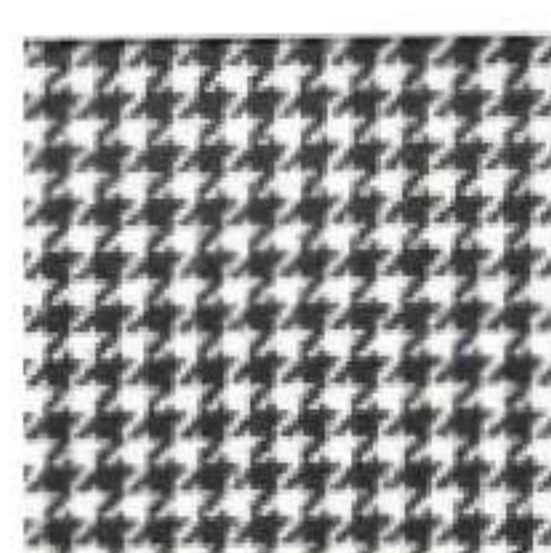
TV
mustard



TB/NE
blue



TG/NF
grey



TN/NH
black

Composition 49% LI, 38% CO, 13% VI

Martindale 35.000



MATCH



G1
ecrù



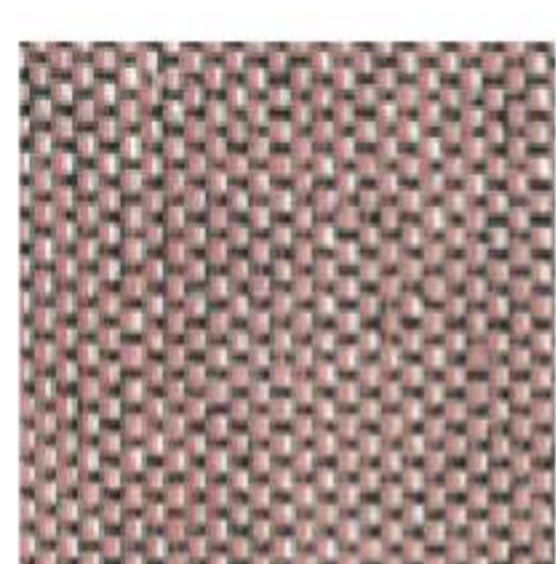
G2
sand



G3
dove grey



G4
dark grey



G5
pink



G6
green

Composition 48% CO, 15% VI, 7% LI, 30% PL

Martindale 52.000



NILO



72
dove



73
orange



74
green



75
grey



70
white



71
ecru

Composition 46% CO, 45% VI, 8% LI, 1% SE

Martindale 20.000



SANDERSON



J
chelsea



I
peony



K
kew

Composition 60% LI, 30% CO, 10% NY

Martindale 40.000

